

## in this issue >>>

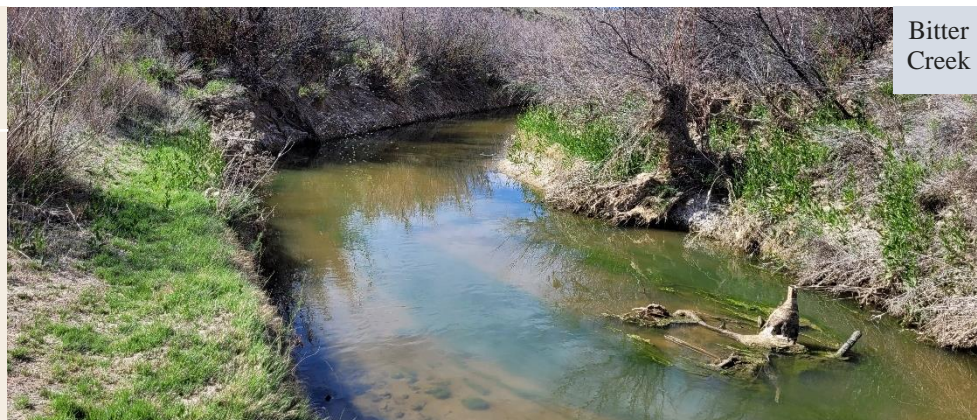
Current Topics

Bitter Creek Monitoring

Community

Ask the Experts

Tree Sales



Bitter  
Creek

## Sweetwater County Conservation District

# High Desert News

## August 2022



## current topics >>>

### Bitter Creek Water Quality Monitoring Spring 2022

*EDE Consultants made site visits to 11 historic site locations and collected water quality samples at 7 project sites on Bitter and Killpecker Creek in May and June 2022.*

At the sites sampled, E. coli concentrations in June were greatest in the center of Rock Springs, suggesting anthropogenic origin. Chloride concentrations in Killpecker Creek remain high and chloride in Bitter Creek were within historic norms, except at BC-10 -which was over twice what has been seen in the past.

**For more information go to [www.swccd.com](http://www.swccd.com)**



## Check out this new Report: Bitter Creek Watershed-Based Plan Implementation Project 2021 Annual Report

The Bitter Creek and Killpecker Creek Watershed Management Plan and Implementation Project 2021 Annual Report and the Bitter Creek Watershed Based Plan are both available on the district's website at: [www.swccd.us/bitter-creek-watershed.php](http://www.swccd.us/bitter-creek-watershed.php)

The Sweetwater County Conservation District continued assessment work within the Bitter Creek Watershed in 2021 in accordance with recommendations from the Bitter Creek Watershed Based Plan. (BCWBP)

A Bitter Killpecker Creek Watershed Advisory Group (BKWAG) meeting was held in April to review project findings and confirm 2021 implementation planning, with input from SWCCD, BKWAG, WDEQ, City of Rock Springs and District's consultant: EDE Consultants LLC. Water quality monitoring was conducted in April and September 2021 at historic site locations across the watershed. Channel and flow conditions were recorded and assessed. Water quality results remained within historic trends.

THE BCWBP includes implementation

planning and a proposed schedule through 2027 for projects to mitigate against WDEQ listed Bitter Creek impairments. It is anticipated that BCWBP implementation

projects will be continued in 2022. A fall 2021 sampling round was conducted at SWCCD project legacy sites in September. The monitoring was conducted to satisfy the BCWBP requirements under management 2 that is defined

**Plan** In the plan and within the Bitter Creek Watershed Sampling and Analysis Plan. Monitoring through 2027 will be used to evaluate trends in water quality, evaluate effectiveness of BMP, and to determine if load and reduction requirements specified in the TMDL report appropriate for both E. Coli and chloride.

\*\*\*Water quality sampling will be conducted in August 2022.

**SWCCD continues to proceed with implementation of the Bitter Creek Watershed-Based Plan**

# Community Enhancement Grants

*Each year, the District accepts Community Enhancement Grant applications from groups, teams, clubs, schools or other civic organizations.*

*In 2022, grant recipient winners were the Green River FFA Program, Simply Sunshine Nursery and the City of Rock Springs.*

*The grant can be written up to \$5,000.00.*



*FFA grant funds will be used for an agriculture facility to include barns, and stables for pigs, sheep, goats and cows as well as a greenhouse. Simply Sunshine Nursery will be using their grant funds for a soil mixer.*



*SWCCD Supervisors and Simply Sunshine/Woodward Family*

*The City of Rock Springs will be purchasing dog waste dispensers at locations thorough out the City's right of ways.*

*This grant assists implementing best management practices in the Bitter Creek Watershed to help with mitigating E. coli concentrations.*



*FFA Grant Recipients*

## Sweetwater County Conservation District

550 Uinta Drive, Ste E  
307-875-4995

*Working Together to Protect, Conserve and Improve our County's Natural Resources*

Find us on the Web:  
[Sweetwater County Conservation District \(swccd.us\)](https://www.sweetwatercountycd.org/)

## 26<sup>th</sup> Annual Trees for Recyclables

The Sweetwater County Conservation District in partnership with the Ray Lovato Recycling Center hosted a Trees for Recyclables Day in May. Area residents were able to take advantage of a free tree and help out the environment by bringing their recyclables to the Recycling Center.

Tree Species included: Chokecherry, Nanking Cherry, Three Leaf Sumac, Ponderosa Pine, and Rocky Mountain Juniper.

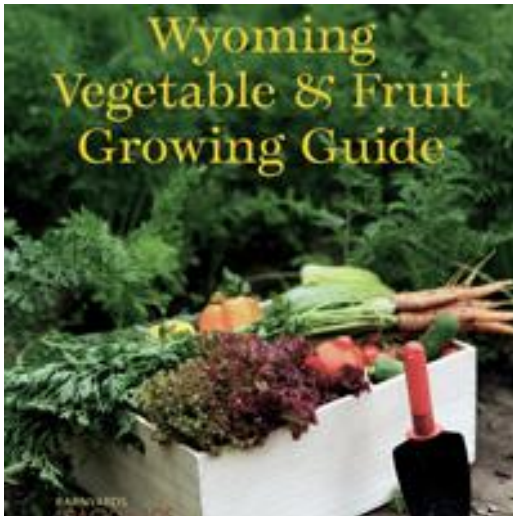


*Family bringing in recyclables for trees*



# Mission Statement

The mission of the Sweetwater County Conservation District is to provide for conservation of the soil, and soil and water resources of this county, and for the control and prevention of soil erosion and for flood prevention or the conservation, development, utilization, and disposal of water, and thereby to stabilize ranching and farming operations, to preserve natural resources, protect the tax base, control floods, prevent impairment of dams and reservoirs, preserve wildlife, protect public lands, and protect and promote the health, safety and general welfare of the people of the this County. (Ref.: Wyoming Statutes Title 11. Agriculture, Livestock and Other Animals § W.S. 11-16-103 et seq.)



New! The Wyoming Vegetable & Fruit Growing Guide is Out! Check it out for great tips on successfully growing fruits and vegetables in a challenging Wyoming climate. Hard copies are available at the office.  
[https://www.wyoextension.org/publications/Search\\_Details.php](https://www.wyoextension.org/publications/Search_Details.php)

ask the experts >>>

**Q:** *What is a Conservation District?*

**A:** **We are** a local governmental subdivision of the state of Wyoming as defined and established by Wyoming Conservation Districts Law. The Sweetwater County Conservation District's Board of Supervisors are elected by the people of Sweetwater County at General Elections by popular vote. Conservation District Board members are the only locally elected board charged specifically with the responsibility of representing local people on natural resource issues.



## Board Meetings

*The Board meets the first Thursday of every month. The public is invited to attend.*  
550 Uinta Drive, Ste E  
Green River, WY 82935

## SWCCD Board of Supervisors

Tom Burris, Chairman  
Larry Folks, Vice Chairman  
Jean Dickinson, Treasurer  
Stephanie Anderson, Secretary  
Henry Bliss, Member

## District Staff

Karen Pecheny,  
District Administrator  
Email: [admin@swccd.us](mailto:admin@swccd.us)  
Ph: 307-875-4995

Natural Resource  
Conservation Service  
(NRCS) Staff

Jeff Lewis  
District Conservationist  
Courtney Thomas  
Soil Conservationist  
Ph: 307-362-3062

# *think trees...*

## *2023 Tree and Shrub Seedling Sale*

Never too early to start thinking about Trees and Shrubs. Look for our conservation grade Tree and Shrub Annual Sale Applications. Start thinking about trees and bushes you want to plant in the spring! (2023) Conservation Grade Tree and Shrub Annual Seedling Sale begins in November/December 2022

Don't forget to get your orders in early, as certain species run out quickly!

Applications will be available for download on our website:

[SWCCD Tree Sales Program | Sweetwater County, WY - SWCCD](#)

Email: [admin@swccd.us](mailto:admin@swccd.us) or call us at: 307-875-4995

Contact us at **307-875-4995**

[www.swccd.us](http://www.swccd.us)



Sweetwater County  
Conservation District  
550 Uinta Drive, Ste E  
Green River, WY 82935



*coming soon >>>*

## *Tree Applications*

*Tree Sale Applications*

*September 1 Board Meeting*

*September: Area Meetings*

*December: WACD Convention*