

Table of Contents

Sweetwater County Conservation District Board	3
Conservation District Mission Statement	4
Conservation District History	5
WATER QUALITY	6
BITTER KILLPECKER CREEK	7
.....Bitter Creek Headcut	8
Big and Little Sandy Rivers Water Quality Monitoring.....	9
Subdivision Reviews	9
Land Planning	10
Breakdown	10
Memorandums of Understanding (MOU)	11
Service Agreements.....	12
Federal Plans	12
BLM - Rock Springs Resource Management Plan (RMP)	12
Coalition of Local Governments	12
Education and Outreach.....	13
2015 Spring Home and Garden Show.....	13
Young at Heart Senior Center Tree Planting.....	13
Education and Outreach.....	14
13 th Annual River Festival River Walk	14
2015 Tree Program.....	15
Tree Windbreak Work shop	15
Green River Arbor Day Celebration and Ray Lovato “Trees for Recyclables Day”	16
Northern Rockies Tree School	16
Meetings and Convention	17
Area V	17
Greater Sage Grouse Candidate Conservation Agreement with Assurances CCAA and Candidate Conservation Agreement CCA Workshop.....	17
Wyoming Association of Conservation Districts (WACD) 2014 Convention	17
Partnerships	18
Natural Resources Conservation Service	18
Little Snake River Conservation District.....	18
Wyoming Landscape Conservation Initiative (WLCI)	18
Sweetwater County Transportation Plan Development	19
Elected Supervisors	20
Mary Thoman - Board Chairman	20

Tom Burris – Board Vice-Chairman 20
Jean Dickinson – Board Secretary..... 21
Henry Bliss – Board Treasurer 21
Bob Slagowski – Rural Supervisor 21
District Staff Personnel, and Special Thanks..... 22
Karen Pecheny – District Clerk..... 22
Justin Caudill – Wyoming Department of Agriculture (WDA) - Wyoming Landscape Conservation Initiative (WLCI) 22
Dennis Doncaster – Bureau of Land Management (BLM) Hydrologist 22
SWCCD Facebook Page and Check out the Website www.swccd.us..... 23
Thanks to Our Cooperators 24
Fiscal Year 2014 Budget 25

Sweetwater County Conservation District Board

District

SUPERVISORS



District Supervisors volunteer hundreds of hours every year in “cooperator” meetings with the federal land management agencies to provide local input to the development of long range plans and projects.



The Sweetwater County Conservation District is comprised of individuals who have expertise, experience, interest, or specific concerns with conservation issues. The Board of Supervisors are elected officials who serve four-year terms on a voluntary basis. There are three rural, one urban and one at-large position.

Supervisors attend monthly Board Meetings and oversee the activities and projects of the Conservation District.

Chairman

Mary Thoman (Rural)

Vice-Chairman

Tom Burris (Rural)

Secretary

Jean Dickinson (Urban)

Supervisor

Bob Slagowski (Rural)

Treasurer

Henry Bliss (at-large)



Jack Morrow Hills in the Red Desert

Conservation District Mission Statement

The mission of the Conservation District is to provide for the conservation of the soil, and soil and water resources of this County, and for the control and prevention of soil erosion and for flood prevention or the conservation, development, utilization, and disposal of water, and thereby to stabilize ranching and farming operations, to preserve natural resources, protect the tax base, control floods, prevent impairment of dams and reservoirs, preserve wildlife, protect public lands, and protect and promote the health, safety and general welfare of the people of this County.



On top of Aspen Mountain

Conservation District History

In the 1930's, the "Dust Bowl" occurred. The Great Plains region suffered a severe prolonged drought, which caused the region's soil to begin to erode. Huge black dust storms blotted out the sun and seemed to swallow the countryside. As a result of the Dust Bowl, the soil conservation act of 1935 was established to develop and implement soil erosion control programs across the nation. The creation of the Soil Conservation Service soon followed. Congress passed legislation declaring soil and water conservation a national priority.

The Big Sandy Soil and Water Conservation District was organized in September of 1960 as a result of local interest in conserving water, soil, and all other natural resources and to promote and maintain the welfare of the people inhabiting the area. A certificate of the first Inclusion of Additional Territory within the District boundary was signed in November of 1969 by the Secretary of State.

Additional changes were made, and in 1974, the entirety of Sweetwater County was within the District area. The District office was originally located in Farson, Wyoming.

In August of 2002, the District changed its name to the Sweetwater County Conservation District (SWCCD) to accurately reflect the area, which it serves. In June of 2004, the District office relocated to Rock Springs. SWCCD is the largest conservation district in the state, covering 10,426 square miles or 6.9 million acres.

The principal priorities for the Sweetwater County Conservation District are Water Quality, Soil Surveys, and Land Planning.

The District is also focused on grazing management, tree establishment, wildlife preservation, education efforts, and other important resource management needs.

Associate members are volunteers who assist with at least one project per year and request to become associate members. Interested individuals may contact the District Office at **307-362-5257** for further information or online at <http://www.swccd.us/contactus.html>

SWCCD holds Board Meetings the first Thursday of every month starting at 4:00 p.m. We welcome you to attend our meetings at 79 Winston Drive, Suite 103 Rock Springs, WY



Nationally, the first conservation district was formed in 1937 and today nearly 3,000 districts are working to conserve our natural resources.

Wyoming passed the Soil Conservation Act in 1941. Wyoming Conservation Districts started forming later that year.



WATER QUALITY



Total Maximum Daily Load (TMDL) Update

Sol Brich, WDEQ Watershed Coordinator, and the SWCCD is currently working on promoting awareness and providing information to the public on the Bitter Creek Watershed E.coli and Chloride TMDL impairments. A TMDL is defined as the amount of pollutant a stream can accept and still meets its designated uses. A TMDL assessment is required by the Clean Water Act.



2015 Bitter Creek Watershed Advisory Group (BKWAG) Meeting met in May to discuss the TMDL timeline and receive updates on 2015 water quality sampling.



2015 Water Quality Sampling

Environmental Design Engineering, (EDE) conducting water quality sampling on Bitter and Killpecker Creeks in the fall of 2014 and spring 2015.

It is the purpose and role of Soil and Water Conservation Districts to:

Identify and prioritize local soil and water resource concerns, and connect the resource users to educational, technical and financial assistance to implement conservation practices and technologies. Continued water quality sampling and analysis sponsored by the District is fundamental to the role of identifying soil and water resource issues that the District is aware of within the Bitter Creek and Killpecker Creek watersheds. Working alongside the State of Wyoming and with the users and residents of the watershed, the Sweetwater County Conservation District can assist in assuring that the solutions to Sweetwater County's water resource issues are focused and fairly administered and the concerns of the resource users are heard.

Every 5 years, the TMDL will be reviewed by the State of Wyoming. Though it is not mandatory for the Conservation District to conduct future sampling, the information gathered from continued sampling and analysis to supplement sampling conducted by the State may contribute to resolving these resource issues at the earliest possible opportunity and prevent encumbering the growth and prosperity of the County and the City.

BITTER KILLPECKER CREEK

During 2014 the SWCCD chose to conduct spring and fall single sample monitoring at project legacy sites to collect generalized information on the current water quality conditions in the watershed. Results from this sampling were reviewed against the project data set for indications of changes in water quality occurring in Bitter or Killpecker Creeks. The 2014 E.coli and chloride analysis results are similar to results previously observed at the legacy sites, and continue to support the conclusions of previous project data evaluations.

In addition to 2014 sampling, several other items of importance to the project were also completed during the year. The SWCCD pursued updated access agreements for all project sampling sites used since 2004. This was done to ensure that a well-documented database of site location, access/site ownership, permission agreements, and contact information is in place and current for the project.

Additionally, during 2014 the project Sampling and Analysis Plan (SAP) was updated and approved by WDEQ and tailored to meet project needs through 2015 and the end of the TMDL development timeframe.



Bitter Creek Headcut

DROP STRUCTURE



Update



The SWCCD is moving forward with applying for grants from the Wyoming Landscape Conservation Initiative (WLCI) and the Wyoming Department of Environmental Quality. (WDEQ). The Sweetwater County Commission supports the project and has provided money for grant match.

If all the grant money is secured, the drop structure project is slated to begin in the spring or summer of 2016.

The objective of the Bitter Creek Drop Structure, which has been in the works for 6 years, is to replace an existing drop structure with an engineered designed configuration at the site of an active head-cut in a reach of the stream.

The \$350,000 project will provide a new drop-type structure to replace, in a new location, the existing structure about 15 miles east of Rock Springs. The head cut protects Interstate 80, industrial sites downstream, grazing activity and the genetically pure flannel mouthed suckers.

If the current, aging structure fails, 1 ton of salty sediment would flow into the Green River and ultimately the Colorado River for every 30 inches the drop moves up stream, a total distance more than 100 miles long



Big and Little Sandy Rivers Water Quality Monitoring

The Sublette County Conservation District (SCCD) began monitoring the Big and Little Sandy Rivers in 2008 in conjunction with the Sweetwater County Conservation District. Two sites established on the Big Sandy River are BS1 and BS2 and two sites LS1 and LS2 on the Little Sandy River. Chemical, biological and physical data are collected at each site. The SCCD collects chemical samples 5 times per year and aquatic insects in the fall. The Sublette County CD provides the manpower, equipment, etc. to conduct the monitoring while the Sweetwater County CD provides half of the funding for this endeavor. SCCD is preparing a report utilizing the biological (macroinvertebrate - aquatic insect) data collected at the four sites since 2008 to determine the biological condition of both rivers. The SCCD hopes to have this report ready for release to the public.

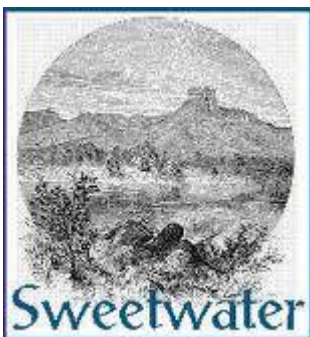


Big Sandy Working Group

The Big Sandy Working Group (BSWG) BLM continues to monitor pre- and post-season grazing along the Big Sandy Riparian Corridors as well on upland sites. The group formed in 1996 with the goal of preserving and enhancing the riparian areas and the water quality of the Big Sandy River from Farson to the confluence of the Green River. A 10 and 50 year vision of the desired condition of the Big Sandy River Corridor was developed early on.

Subdivision Reviews

The District has 60 days to review and comment on a proposed subdivision review. Within this review, the District will consider soil suitability, erosion control, sedimentation, and flooding problems. This information is used to inform the local Planning & Zoning staff and County Commissioners of natural resource concerns specific to the development.



Land Planning

Breakdown

SWCCD understands that Sweetwater County must be represented during federal land planning processes, since over 70% of Sweetwater County is public land. As a result, SWCCD is participating as a cooperating agency in the Rock Springs Resource Management Plan (RMP) as well as the Kemmerer, Lander, Pinedale, and Rawlins BLM Resource Management Plan Revision, the Moxa Arch Area Natural Gas Development Infill Project, and the Ashley National Forest Management Plan revision. SWCCD continues to work with the Lincoln, Uinta and Sublette County Conservation Districts and the Uinta, Lincoln, Sweetwater and Sublette County Commissions as a Coalition of Local Governments (CLG) to play an active role in future land and resource planning. SWCCD Chairman, Mary Thoman, serves on the Coalition of Local Governments Executive Committee.

The District and CLG provided comments on several Resource Management Plan (RMP), Environmental Assessments (EA), and Environmental Impact Statements (EIS)

- United States Department of the Interior – Bureau of Land Management

Rock Springs Field Office

- Resource Management Plans
- Big Sandy Working Group – biannual monitoring
- Jack Morrows Hills Environmental Impact Statement – Implementation
- Conversions, Allotment plans
- Kanda Pipeline
- West-Wide Energy Corridors
- Hiawatha Regional Energy Development Project Programmatic Agreement
- Lost Creek *In Situ Mine*
- Grazing permit Renewals Quaking Aspen Wind Energy Project
- Comprehensive Travel and Transportation Management Plan (CTTMP)
- Riley Ridge to Natrona Project EIS
- Wild Horse Management
- TransWest Express Transmission Line Project

Kemmerer Field Office

- Kemmerer Resource Management Plan (RMP)
 - Moxa Arch EIS
 - Gateway Transmission Line
 - Wind Energy

Rawlins Field Office

- Rawlins Resource Management Plan
 - Continental Divide-Creston EIS
 - Reclamation Plan
 - Grizzly and Daley Allotment Management Plan and MOU
 - RMP - Visual Resource Management Amendment VRM & Critical Environmental Concern

Pinedale Field Office

- Pinedale Resource Management Plan
 - LaBarge Platform EIS
 - Travel Management Plan
 - Normally Pressurized Lance
 - Sublette Mule Deer Plan EA

Lander Field Office

- Lander Resource Management Plan
 - Grazing permit renewals
- USDA – National Forest Planning Processes
 - Uinta Wasatch Cache National Forest
 - High Uintas Sheep Grazing Project
 - Bridger Teton National Forest Revision
 - Travel Management Plan
 - Related projects
 - Ashley National Forest
 - Flaming Gorge National Recreation Area and Dam/appeal of travel managements plan/comments on grazing permit renewals
 - Ashley Land & Resource Management Plan

Memorandums of Understanding (MOU)

The District has several MOU's with different entities:

- Rock Springs Resource Management Plan
- Natural Resource Conservation Service (NRCS) Soil Survey and Technical Assistance
- USDOJ - Bureau of Land Management
- USDA Forest Service

- Wild & Scenic River Suitability Studies in Utah between SWCCD and USDA Forest Service
- Ashley National Forest Travel Plan
- Eden Valley Irrigation & Drainage District
- Upper Green Flaming Gorge (Tri-State) Watershed
- An agreement between United States Department of Agriculture (USDA), NRCS agencies for Colorado, Utah, and Wyoming
- Resource Management Plan -Visual Resource Management Plan Amendment and EA
- Gateway South Transmission Line
- Trans-West Express Transmission Line
- Greater Sage Grouse National Planning Strategy Utah Sub region
- Red Rim-Daley and Red Rim-Grizzly Wildlife Habitat Management Areas
- Jack Morrow Hills Coordinated Activity Plan
- Kemmerer Resource Management Plan
- Rawlins Resource Management Plan
- Continental Divide Creston Natural Gas Development
- NRCS Henry's Fork Salinity Control Project
- Sage-Grouse Policy RMP Amendments
- Utah Sub-Region Greater Sage-Grouse Land Use Plan Amendment

Service Agreements

Little Snake River Conservation District Technical Assistance.

Federal Plans

BLM - Rock Springs Resource Management Plan (RMP)

The Rock Springs BLM is revising a new Resource Management Plan (RMP) that will guide the use, development, and protection of nearly all natural resources in much of Sweetwater County and portions of Sublette, Lincoln, Uinta, and Fremont Counties. The Rock Springs RMP will replace a 13-year old Green River RMP. SWCCD is a cooperator agency on the plan and spent much of 2014-2015 working with the revision of the RMP

Coalition of Local Governments

The Coalition of Local Governments (CLG) consists of four county commissions (Uinta, Lincoln, Sweetwater & Sublette) as well as four conservation districts in SW Wyoming (Sweetwater, Lincoln, Uinta, and Sublette). The CLG meets monthly to review federal plans and projects. The Coalition works with legal, technical, biologist, economic, and wildlife team of experts to write "scientifically credible" and "legally defensible" draft comments for the federal administrative record. During the past year the CLG has participated in numerous week-long pre-decisional planning meetings as cooperating agency.

Education and Outreach

2015 Spring Home and Garden Show

Sweetwater County Conservation District was excited to have a booth at the Springs Home Show in April at the Events Complex. There were over 100 booths to show the community what the organizations and vendors have to offer. The Conservation District passed out information on education, soil, water quality, flowers and trees.



Young at Heart Senior Center Tree Planting

The children at the Young at Heart Early Learning Center planted 45 trees donated by the Sweetwater County Conservation District. The District, kids and volunteers all came together to help plant the trees. The trees will provide a windbreak, for a community garden with flowers, paths and walkways growing fruits and vegetables with the kids in the summer and hopefully a gazebo.



Education and Outreach

13th Annual River Festival River Walk

“The River walk is geared towards families. Each station is a hands-on learning experience with something to do with the river or habitats near the river.” Nick Walrath, Green River Project Manager for Trout Unlimited

The River Walk had 10 stations to stop at along the greenbelt in Green River. Each participant received a map of the river and the course, where each station was located and a brief description of each station. Participants will receive a stamp from each station. After participants receive all the stamps they are eligible for a drawing. SWCCD donated 50 aspen trees, and had a tree planting station near the horse corrals, along with the Wyoming Game and Fish and City of Green River. Participants helped plant and then name their tree.



2015 Tree Program

The Sweetwater County Conservation District sold 2,551 seedling trees and perennial plants this year. Customers came to the Sweetwater County Events Complex in May to pick up the trees they ordered earlier in the year. The seedling tree program enables farmers, ranchers and other landowners throughout the county to purchase trees for their property.

The purpose of the program is to encourage tree planting around the county to create wind barriers to protect buildings and livestock, serve as snow fences and provide shelter for wildlife. Trees can also be used to stabilize stream banks, reduce noise, and provide shade, control erosion and moisture in an area that might otherwise run off through creeks and rivers. Engelmann Spruce came in as the most popular potted tree ordered, while the fruit trees came in as the species favorite trees, applications and information can be found on the District's website at www.swccd.us. You must own at least two acres of land to participate in the program.



Tree Windbreak Workshop



The District hosted a tree workshop at the Farson Community Center in May. Jacob McCarthy, Wyoming State Forestry Division, gave a presentation to landowners who requested more information on how to establish, maintain and build a windbreak on their property. Staff also went over the District's tree program and proper planting for seedling trees.



Tree Workshop
Friday March 27, 2015
Farson Community Center
1-3 PM

Guest Speaker: Jacob McCarthy
Asst. District Forester
Learn about tree windbreaks
Tree planting
Seedling Tree Program
Karen Pecheny, SWCCD

For more information please call: 307.362.3062
Ext. 307
Refreshments will be provided
Enter to win Prizes!!



Tree windbreak with shade tree protection

Sweetwater County
Conservation
District (SWCCD)

Green River Arbor Day Celebration and Ray Lovato “Trees for Recyclables Day”

Even though the weather was chilly that first weekend in May, both Green River and Rock Springs residents came out to pick up their seedling trees at Centennial Park in Green River and at The Ray Lovato Recycling Center in Rock Springs. The turnout was great for both events, and SWCCD hopes to partner again next year!



Northern Rockies Tree School

All of the presentations from the Cody 2014 Northern Rockies Tree School are now posted on the Dillon Tree Board website. Here is the link: <http://www.dillontrees.org/northern-rockies-tree-school-presentations>

Staff attended the 5th Annual Northern Rockies Tree School held in Cody October 8-9th. Seven districts attended from across the state. Wednesday’s session began with Dr. Robert Vanderhoof, Regional Forester, Rocky Mountain Power. He spoke about the secret life of the tree and leaves are the power plant of the tree. Other speakers included Vince Ubrina, certified arborist and tree assessor, Dr. Richard Thureau spoke about geospatial technology, PlanItGeo, LLC.

Speaker -Justin Evertson, Nebraska Forest Service, and University of Nebraska–Lincoln



Meetings and Convention

Area V

The *Area V* meeting was hosted by Star Valley Conservation District, in Lyman, Wyoming on September 3, 2014 at the Star Valley Community Center in Etna. Sweetwater Lincoln, Star Valley, Sublette, Teton, Little Snake River and Uinta County Conservation Districts attended the training. The agenda included an update from Natural Resource Conservation Service, Wyoming Department of Agriculture, and Spill Prevention Control, from WDEQ was included in the presentations. Lincoln County Conservation District will host the Area V Meeting in September 2015.

Greater Sage Grouse Candidate Conservation Agreement with Assurances CCAA and Candidate Conservation Agreement CCA Workshop

In March the District invited Leanne Correll, Wyoming Stock Growers Association along with Pauline Hope, U.S. Fish & Wildlife Service to speak about participation in the program and the differences between the two. Held at the Farson Community Center and the Santa Fe Grill in Rock Springs, the workshops were designed to assist landowners and land managers to better understand the regulations and the choices available for Greater Sage Grouse management on their property.



Wyoming Association of Conservation Districts (WACD) 2014 Convention

The Wyoming Association of Conservation Districts (WACD) convention was held November 18-20 in Sheridan at the Holiday Inn. This year the Association welcomed the Wyoming Chapter of Soil & Water Conservation Society. The theme for this year was “Working for the Wyoming Way of Life”. Highlights of the convention included the keynote address given by Dan Dagget, from Eco Radical to Conservative Environmentalist; and Brent Van Dyke, 2nd Vice President National Association of Conservation Districts spoke at the convention. The convention included the awards ceremony. Shaun Sims, WACD president presented Wally Johnson, Sweetwater County Commission Chairman, with the elected official’s award. Next year’s convention will be held November 3-5 in Laramie.



Shaun Sims, WACD President, presenting Wally Johnson, Sweetwater County Commission Chairman, with the elected official’s award at the 2014 WACD Convention.

Partnerships

Natural Resources Conservation Service

The Sweetwater County Conservation District cooperates closely with the Natural Resources Conservation Service (NRCS), which was formerly the Soil Conservation Service (SCS), an agency of the United States Department of Agriculture (USDA). The Natural Resources Conservation Service (NRCS) is the primary federal agency that works with private landowners to help them conserve, maintain, and improve their natural resources. The agency emphasizes voluntary, science-based conservation; technical assistance; partnerships; incentive-based programs; and cooperative problem solving at the community level. Jeff Lewis is the NRCS District Conservationist with an office located in Rock Springs, WY. He is available to landowners for technical assistance and providing direction for financial support in various conservation programs. Jeff can be reached at (307) 362-3062 ext. 106.

Little Snake River Conservation District

SWCCD and LSRCD agreed to establish shared priorities with respect to conservation issues and programs or projects on private lands, which are intermingled with federal lands. Due to shared interests between the two conservation districts and sharing the same boundary, they have entered into a cooperative agreement.

Wyoming Landscape Conservation Initiative (WLCI)

WLCI is an interagency working group of partners that is beginning the process of establishing a much larger coalition of government and non-government organizations. Local Project Development Teams identify local issues that are important to the landscape and cooperatively create projects to address identified needs for local wildlife, habitat, and other resource issues.

Every summer WLCI determines where their funds will go and how they will be distributed. This year replacing the existing head cut structure on Bitter Creek ranked first on WLCI's priority list. The whole watershed is the project, but the hinge pin is the diversion structure.



Seedskadee National Refuge, North of Green River

Sweetwater County Transportation Plan Development

With the support of Sweetwater County, the Sweetwater County Conservation District has developed an extensive survey of existing roads within Sweetwater County, most of which is within the Rock Springs Field Office. With the help of Rocky Mountain Survey, Inc., and Dave Allison, consultants, work continues on research for temporary roads, primitive roads and historical research. These comments will be valuable as the BLM moves forward with their Comprehensive Travel and Transportation Management Plan (CTTMP). The plan will be included in the ongoing Rock Springs Resource Management Plan Revision Planning effort.

The review of comments on Travel Management Areas 2 and 3 of the CTTMP has been completed and a CD with the responses and GIS data for all ten Travel Management Areas was sent to cooperating agencies on August 27. No additional work on the CTTMP will be conducted until after the RMP Alternative D has been developed.



Elected Supervisors

Mary Thoman - Board Chairman



Wyoming Landscape Conservation Initiative - Executive Committee representative for seven SW Wyoming counties-a special federal initiative to provide for habitat improvement projects in the heavily mineral impacted SW Wyoming counties (see wlc.gov for more). Two-term Chairman of WLCI.

CLG Executive Committee - A Coalition of Local Governments consisting of four county commissions and five conservation districts in SW Wyoming (Sweetwater, Lincoln, Uinta, Little Snake River in Carbon County and Sublette). The CLG meets monthly to review federal plans and projects. They work with a legal, technical, economic, and wildlife team of experts to draft comments for forest and Bureau of Land Management plans and projects.

Big Horn Sheep working Group -Former Governor Geringer and Senator Thomas assisted the group of interested individuals and organizations in the initial stages. A Big Horn -Domestic Sheep Plan for Wyoming was developed and approved by the Wyoming Game and Fish Commission. Numerous protocols were developed for the Wyoming Game and Fish and others to follow when dealing with big horn sheep. The group was instrumental in obtaining a research component for Wyoming domestic-wildlife disease issues. The Legislature provides funding. The group meets annually to discuss the latest research and anything related to big horn sheep or domestic sheep interactions. (Plan is available on the WG&F web site)

Big Sandy Working Group - Federal livestock grazing permittees, interested parties, and the Bureau of Land Management have met for over ten years to address wildlife and domestic livestock issues along the Big Sandy River. A 50-year vision and monitoring plan have been developed. Wyoming Water Development small project funding was matched with permittees and BLM funds to implement a series of projects including nine upland wells, three reservoirs, two pipelines and riparian corridor electric fencing. Five riparian sites are monitored in the fall and spring to measure use levels by livestock and wildlife. Fencing provides for summer rest in hopes of promoting willow growth along the river.

- Jack Morrow Hills SEIS Implementation – Serves as the District’s liaison in implementing the plan.
- Rock Springs resource Management Plan (RMP) Cooperator
- Regional Economic Model (REMI) and Transportation Plan
- Kemmerer RMP and Moxa Arch EIS – District liaison
- Wyoming Landscape Conservation Initiative (WLCI) Executive Committee Member

Tom Burriss – Board Vice-Chairman



Eden Valley Irrigation District

Bitter Creek Killpecker Creek Watershed Advisory Group - Co-Chair currently implementing the Bitter Creek and Killpecker Creek Watershed Plan.

Seedling Tree Program Supervisor Liaison.

Jean Dickinson – Board Secretary



Coalition of Local Governments – Liaison for SWCCD

Cooperating Agency to the Hiawatha EIS Programmatic agreement - Serves as the liaison for the District.

Rawlins Field Office Visual Resource Management Plan and ACEC.

Rawlins Resource Management Plan

Continental Divide Creston EIS – District Liaison

TranWest Transmission Line EIS – District Liaison

Energy Gateway South Transmission Line EIS – District Liaison

Rock Springs Resource Management Plan (RMP) Cooperator

Sage Grouse Revision EIS - District Liaison

Ashley National Forest Motorized Travel Plan and Forest Revision- Serves as the liaison for the District

Daley Allotment Memorandum of Understanding, (MOU)

Serves as the liaison between the affected conservations districts, Rawlins Field Office, and Wyoming Game & Fish Department.

Tri-State MOU - Sweetwater Wyoming, Moffat County Colorado, and Daggett County Utah State NRCS for Wyoming, Colorado and Utah. - Serves as the liaison for the District.

Henry Bliss – Board Treasurer



Board Treasurer

Computer/IT

Website Design

Co-Lead Bitter Creek

Bob Slagowski – Rural Supervisor



Cedar Mountain Grazing Association – Serves as a member and liaison for the District

Local Sage Grouse Working Group – serves as a liaison for the District

People’s Canal and Sheep Creek Canal – Serves as a member and liaison for the District

District Staff Personnel, and Special Thanks

Karen Pecheny – District Clerk



Administrative Duties, which include - Administrate daily, monthly, quarterly, and annual records and reports for the District. She attends Board, Area V, committee, staff meetings, Conventions and various applicable training.

Education and Outreach Coordinator and Tree Program Coordinator

Staff attended the WCDEA Training held in March 2015 at the C'mon Inn in Casper, and Northern Rockies Tree School in October.

Justin Caudill – Wyoming Department of Agriculture (WDA) - Wyoming Landscape Conservation Initiative (WLCI)



Justin is the Ag Program Coordinator for the WDA and WLCI, along with his full work load, he regularly attends SWCCD Board Meetings. The District appreciates his hard work, updates on projects, help in finding funding sources and wiliness to research. The District gives special thanks to Justin and everything that he brings to the District.

Dennis Doncaster – Bureau of Land Management (BLM) Hydrologist



Dennis is the hydrologist for BLM, and has helped the District with water quality projects on Bitter Creek. The Wyoming Department of Environmental Quality (WDEQ) has requested SWCCD to gather high flow data of the creek to support Total Maximum Daily Load (TMDL) development and Dennis has helped in collecting samples for that effort. Dennis continues to attend and support the Bitter Creek Watershed Advisory Group (BKWAG) and its efforts for cleaner water. The District gives special thanks to Dennis for his knowledge and expertise.



SWCCD Facebook Page and Check out the Website www.swccd.us

SWCCD has a Facebook Page. We hope you'll decide to "Like Us" and join by visiting Sweetwater County Conservation District.

Sweetwater County Conservation District Board meets the first Thursday of every month at 4:00 pm

Phone Number: 307-362-5257

[79 Winston Drive, Suite 103, Rock Springs, WY 82901](http://79WinstonDrive.com)

To find out more about us, be sure to visit our updated website at <http://www.swccd.us>

SWEETWATER COUNTY CONSERVATION DISTRICT

1000 West Main Street, Suite 103
Rock Springs, WY 82901
Phone: 307-362-5257
Fax: 307-362-1048
<http://www.swccd.us>

ABOUT | NEWS & EVENTS | PROJECTS & GRANTS | PLANS & POLICIES | SUPERVISORS & STAFF | TREE SALES | EDUCATION | GALLERY

To Protect, Conserve and Improve Our County's Natural Resources

Education | News & Events | Projects & Grants

MISSION STATEMENT

Provide for the conservation of the soil, and soil and water resources of this County, and for the control and prevention of soil erosion and for flood prevention of the construction, development, all other, and disposal of water, and hereby to stabilize ranching and farming operations, to preserve natural resources, protect the tax base, control floods, prevent incursions of dams and reservoirs, preserve wildlife, protect public lands, and protect and promote the health, safety and general welfare of the people of this County.

DISTRICT MONTHLY BOARD MEETINGS

The Conservation District Monthly Board meets generally at the SWCCD Service Center on the first Thursday of each month. Meetings start at 4:00 pm. The meeting open to the public. For more information call the SWCCD office at 307-362-5257.

[Contact Us: swccd@swccd.us]

Thanks to Our Cooperators

Anadarko
Associate Board Supervisors
Big Sandy Working Group
Bitter Creek and Killpecker Creek Watershed
Advisory Group
BKS Environmental
BP of America
Bureau of Reclamation
City of Green River
City of Rock Springs
Coalition of Local Governments
Colorado State Forest Service Nursery
Congressman Lummis
Conservation Restoration and Seeding
Department of Agriculture
EnCana
Enercrest
Environmental Protection Agency
Farm Services Agency
Farson Feed Store
Environmental Design Engineering
Farm Service Agency
K.C. Harvey
Lincoln County Conservation District
Little Snake River Conservation District
Muley Fanatic Foundation
National Association of Conservation Districts
Natural Resource Conservation Service
Questar Exploration and Production
Representative Cynthia Lummis
Rock Springs Chamber of Commerce
Rock Springs Grazing Association
Rocky Mountain Survey
Seedskadee National Wildlife Refuge
Senator John Barrasso
Senator Mike Enzi's Office
Southwest Wyoming Industrial Association
Sweetwater County
Star Valley Conservation District

State Grazing Board – Dick Loper
Sublette County Conservation District
Sweetwater County Agriculture Producers
Sweetwater County Libraries
Sweetwater County Commissioners
Teton County Conservation District
Trout Unlimited
Uinta County Conservation District
U.S. Bureau of Land Management
U.S. Fish and Wildlife
U.S. Forest Service
U.S. Geological Survey
University of Wyoming
Vermillion Ranch Limited Partnership
W. Wyoming Community College-Green River
Center
Wexpro
Wyoming Agriculture in the Classroom
Wyoming Association of Conservation Districts
Wyoming Department of Agriculture
Wyoming Department of Environmental Quality
Wyoming Department of Transportation
Wyoming Game & Fish Department
Wyoming Governor's Office
Wyoming Landscape Conservation Initiative
Wyoming Livestock Board
Wyoming Natural Resource Foundation
Wyoming State Engineers Office
Wyoming State Forestry
Wyoming State Lands and Investments Board
Wyoming State & Trust Lands
Wyoming State Planning Office
Wyoming Water Development Office
Wyoming Wildlife and Natural Resource Trust

Fiscal Year 2014 Budget

Expenditures

Administration	\$87,315.00
Operations	\$214,800.00
Indirect Costs	<u>\$ 16,685.00</u>
Total	\$ 320,800.00

Revenue

Local Revenue	\$320,800.00
State Revenue	\$38,824.00
WDEQ Revenue	\$22,326.00
Tree Revenue	<u>\$550.00</u>
Subtotal	\$382,500.00

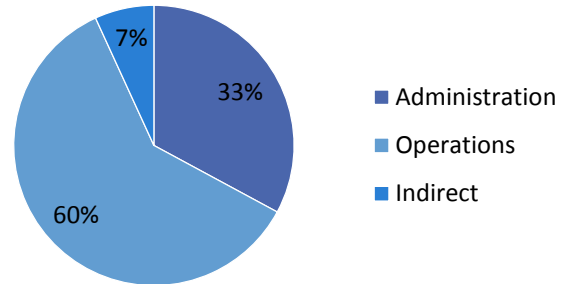
Cash On Hand	<u>\$16,947.00</u>
Total	\$ 399,447.00

The Annual Budget Hearing for the Sweetwater County Conservation District was held on Tuesday, July 22, 2014 at 10:00am.



Justin Caudill, WDA
 Jean Dickinson, Bob Slagowski, Henry Bliss,
 Tom Burris, Mary Thoman, Supervisors
 Staff, Karen Pecheny

Expenditures



Revenue

